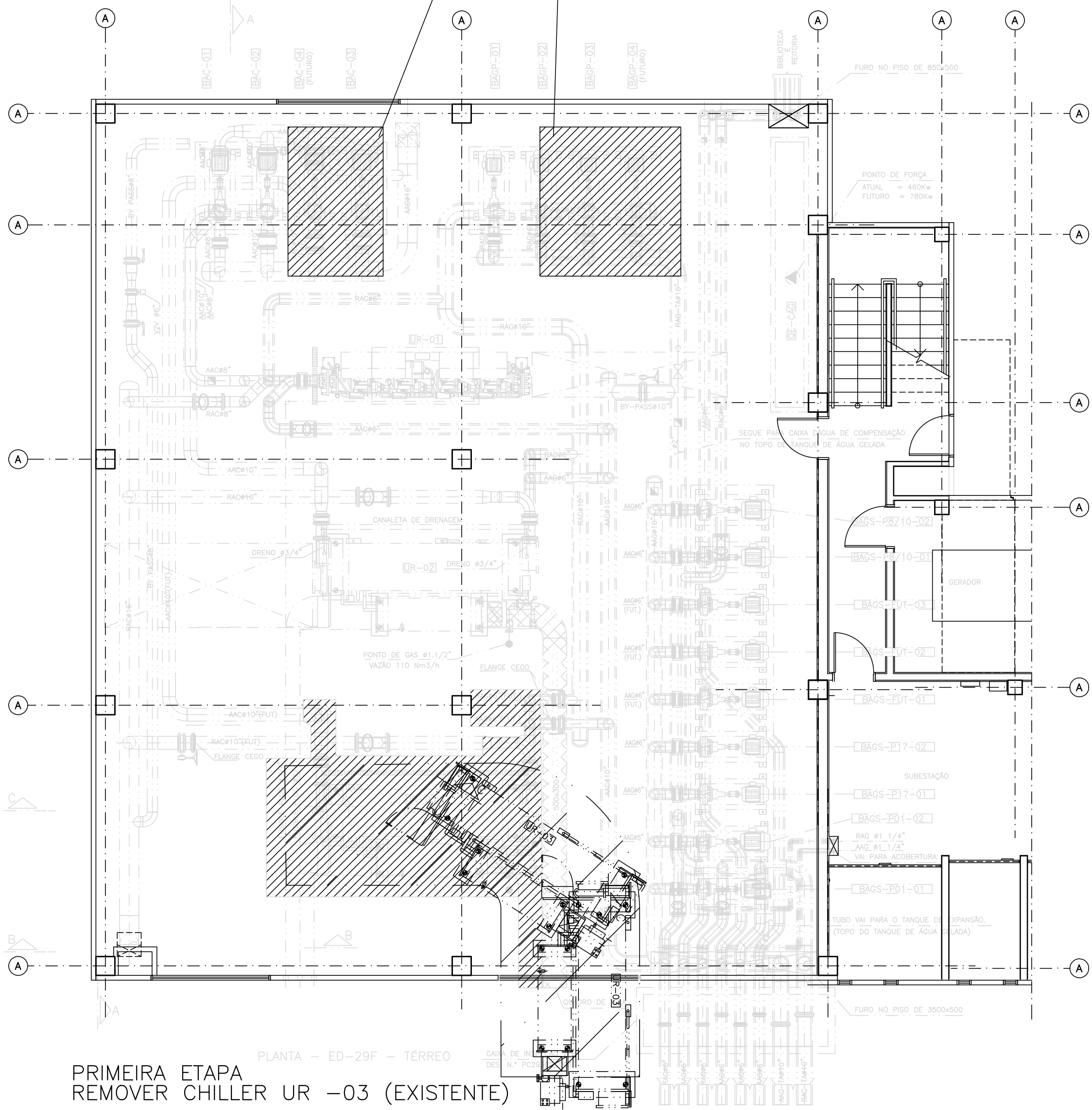
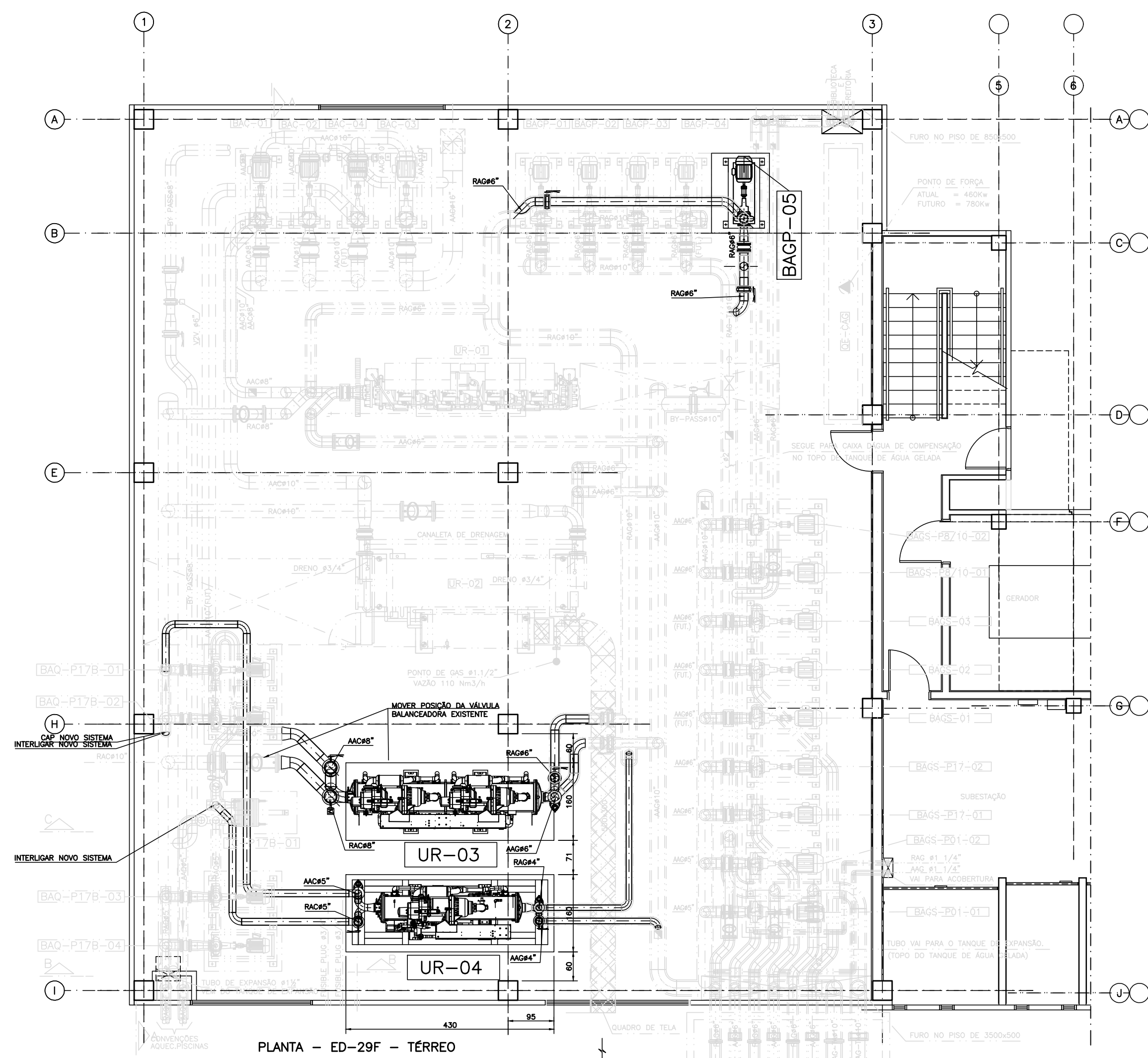


ALTERAR ROTOR DAS BOMBAS  
BAC-03/04 (UMA BOMBA POR VEZ)

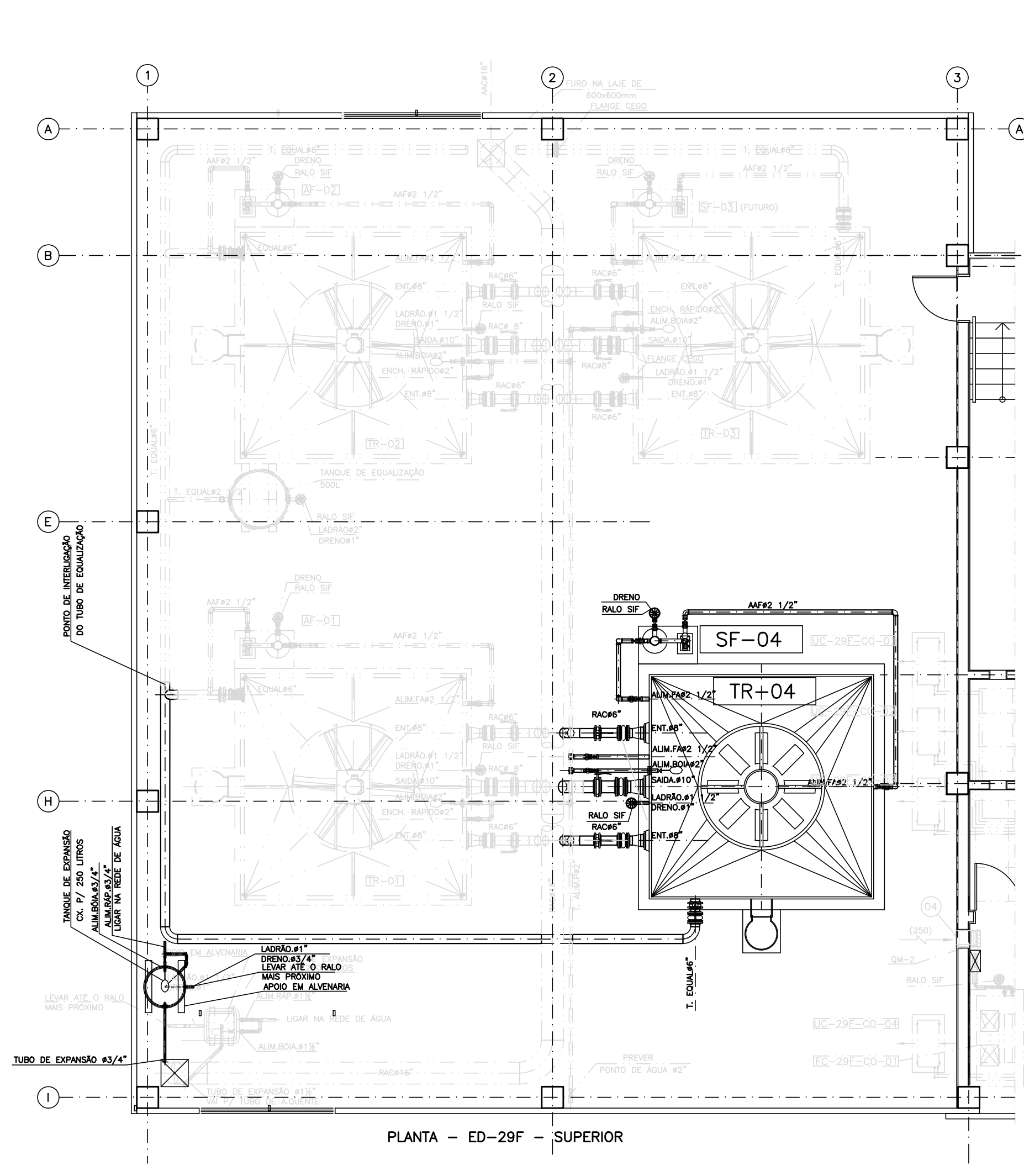
ALTERAR ROTOR DAS BOMBAS  
BAG 02/03/04 (UMA BOMBA POR VEZ)



PRIMEIRA ETAPA  
REMOVER CHILLER UR -03 (EXISTENTE)



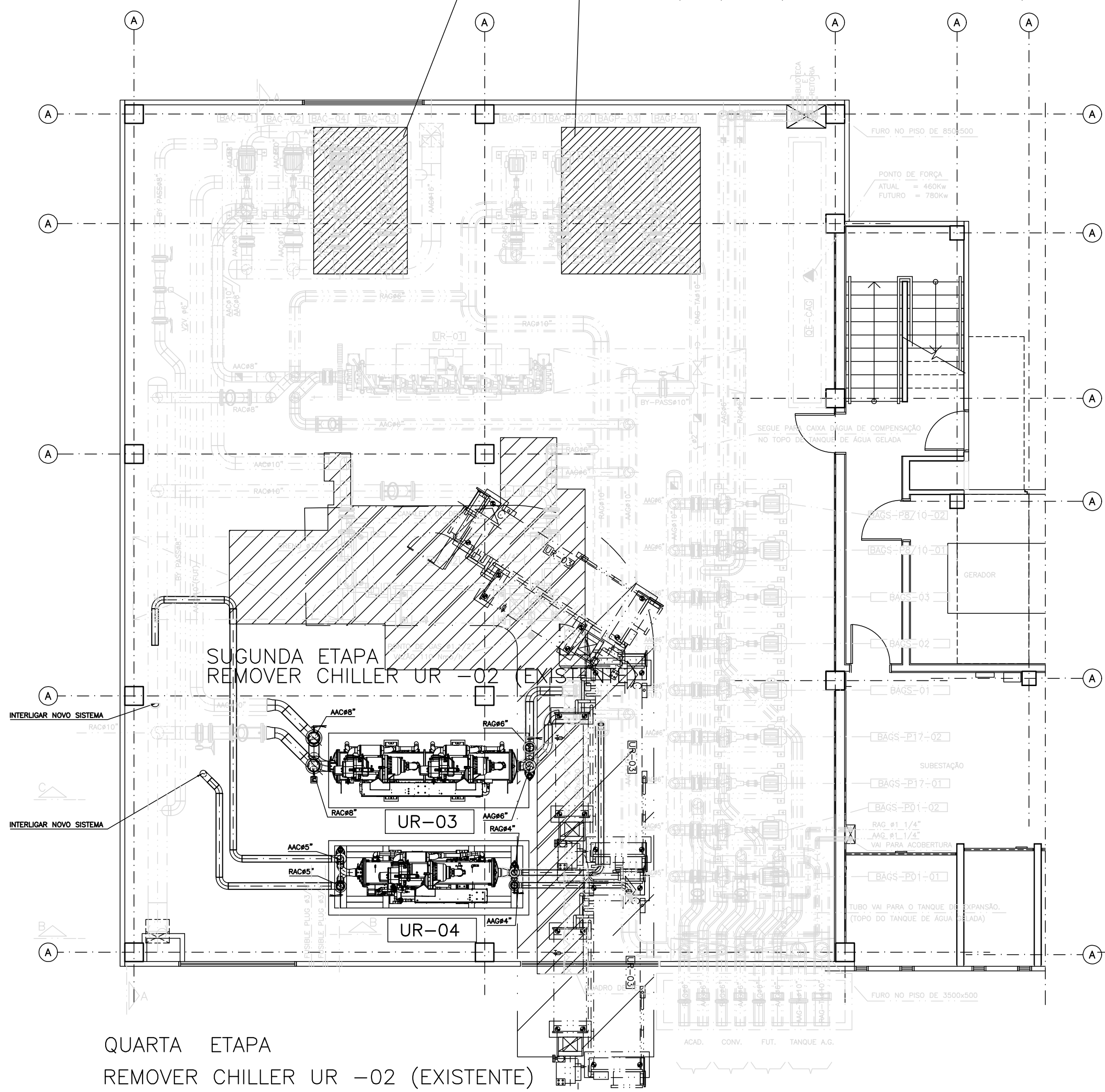
SEGUNDA ETAPA  
MONTAR CHILLES UR -03 /04 NOVO



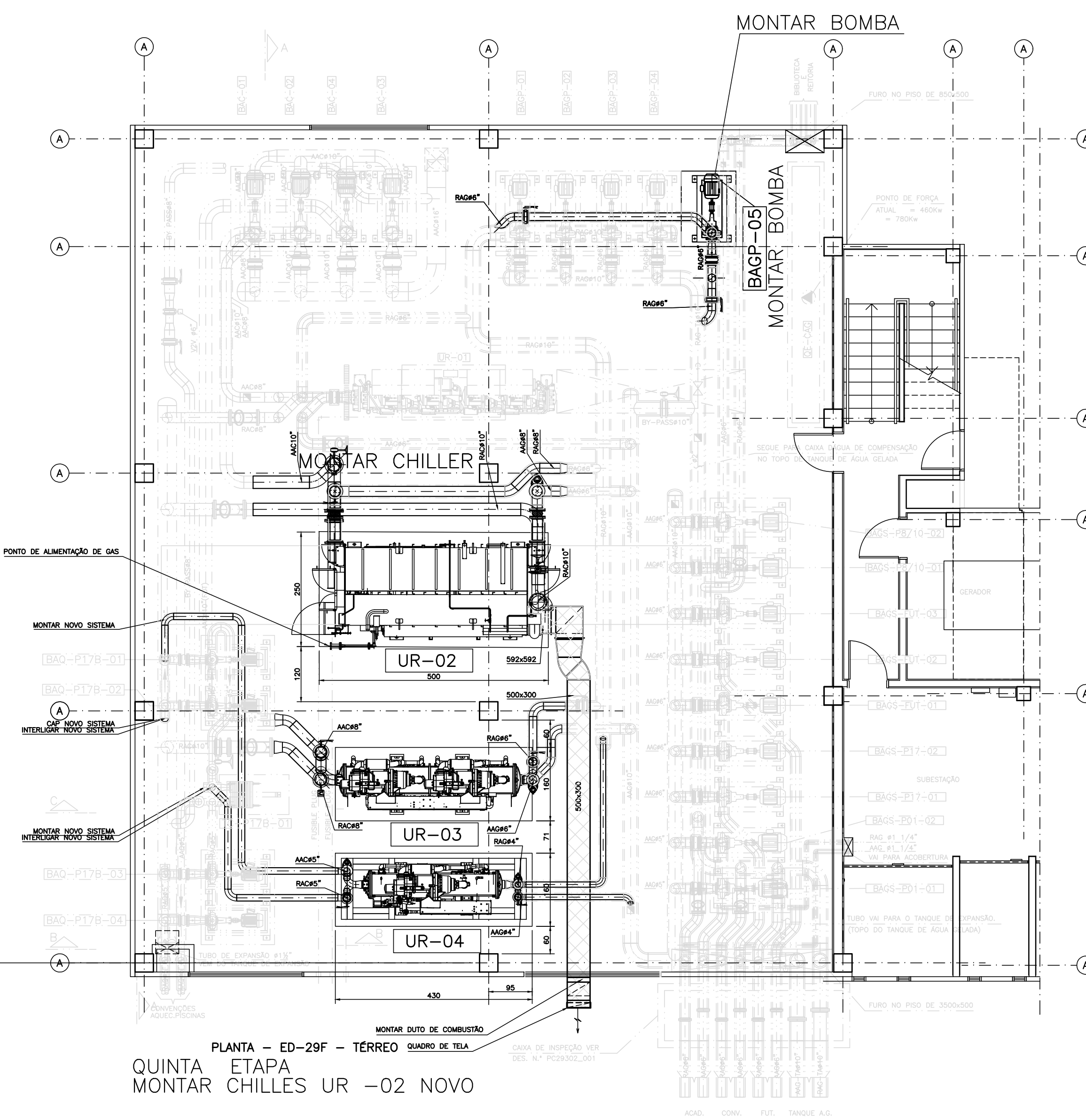
TERCEIRA ETAPA  
MONTAR TORRE TR-04 NOVA

ALTERAR ROTOR DAS BOMBAS  
BAC-03/04 (UMA BOMBA POR VEZ)

ALTERAR ROTOR DAS BOMBAS  
BAG 02/03/04 (UMA BOMBA POR VEZ)



QUARTA ETAPA  
REMOVER CHILLER UR -02 (EXISTENTE)



QUINTA ETAPA  
MONTAR CHILLES UR -02 NOVO

LEGENDA:  
JE - JUNTA DE EXPANSÃO  
FL - FLANGE  
VB - VALVULA BORBOLETA  
P640 - TUBO DE POLIETILENO DE ALTA DENSIDADE

NOTAS:  
1 - DIMENSÕES EM MILÍMETROS, EXCETO TUBULAÇÕES EM POLEGADAS E OUTRAS INDICADAS.  
2 - PARA FLUXOGRAMA VER DESENHO PE-01  
3 - PARA DESENHO DE CONFIGURAÇÃO FINAL E CARACTERÍSTICAS VER DESENHO PE-02

00	EMIÇÃO INICIAL	15/12/23	RJA
REV.	MODIFICAÇÃO	DATA	APPROVADO

<b>TEKNIKA</b>		PROJETOS E CONSULTORIA S/C LTDA.	
R. BARÃO DO BANANAL, 300 - tel: (011) 3672-1657 / fax: (011) 3672-3701 / e-mail: teknika@uol.com.br			
cliente: SENAC			
projeto: CAMPUS SENAC - EDIFÍCIO 17B			
título: RETROFIT CAG			
PLANTAS DE SEQUENCIA DE MONTAGEM			
escala:	data:	projeto:	revisão:
1:75	30/08/23	DAMÁSIO	DAMÁSIO
ENGENHEIRO RESPONSÁVEL:		PROJETO EXECUTIVO	
CREA:		numeração:	
RAL JOSÉ DE ALMEIDA		1784-CAG-AC-PE-03-R00	
134.658-0/20			

COLOR	REV	SHADE
0.00	0.00	0.00
0.01	0.01	0.01
0.02	0.02	0.02
0.03	0.03	0.03
0.04	0.04	0.04
0.05	0.05	0.05
0.06	0.06	0.06
0.07	0.07	0.07
0.08	0.08	0.08
0.09	0.09	0.09
0.10	0.10	0.10
0.11	0.11	0.11
0.12	0.12	0.12
0.13	0.13	0.13
0.14	0.14	0.14
0.15	0.15	0.15
0.16	0.16	0.16
0.17	0.17	0.17
0.18	0.18	0.18
0.19	0.19	0.19
0.20	0.20	0.20
0.21	0.21	0.21
0.22	0.22	0.22
0.23	0.23	0.23
0.24	0.24	0.24
0.25	0.25	0.25
0.26	0.26	0.26
0.27	0.27	0.27
0.28	0.28	0.28
0.29	0.29	0.29
0.30	0.30	0.30
0.31	0.31	0.31
0.32	0.32	0.32
0.33	0.33	0.33
0.34	0.34	0.34
0.35	0.35	0.35
0.36	0.36	0.36
0.37	0.37	0.37
0.38	0.38	0.38
0.39	0.39	0.39
0.40	0.40	0.40
0.41	0.41	0.41
0.42	0.42	0.42
0.43	0.43	0.43
0.44	0.44	0.44
0.45	0.45	0.45
0.46	0.46	0.46
0.47	0.47	0.47
0.48	0.48	0.48
0.49	0.49	0.49
0.50	0.50	0.50
0.51	0.51	0.51
0.52	0.52	0.52
0.53	0.53	0.53
0.54	0.54	0.54
0.55	0.55	0.55
0.56	0.56	0.56
0.57	0.57	0.57
0.58	0.58	0.58
0.59	0.59	0.59
0.60	0.60	0.60
0.61	0.61	0.61
0.62	0.62	0.62
0.63	0.63	0.63
0.64	0.64	0.64
0.65	0.65	0.65
0.66	0.66	0.66
0.67	0.67	0.67
0.68	0.68	0.68
0.69	0.69	0.69
0.70	0.70	0.70
0.71	0.71	0.71
0.72	0.72	0.72
0.73	0.73	0.73
0.74	0.74	0.74
0.75	0.75	0.75
0.76	0.76	0.76
0.77	0.77	0.77
0.78	0.78	0.78
0.79	0.79	0.79
0.80	0.80	0.80
0.81	0.81	0.81
0.82	0.82	0.82
0.83	0.83	0.83
0.84	0.84	0.84
0.85	0.85	0.85
0.86	0.86	0.86
0.87	0.87	0.87
0.88	0.88	0.88
0.89	0.89	0.89
0.90	0.90	0.90
0.91	0.91	0.91
0.92	0.92	0.92
0.93	0.93	0.93
0.94	0.94	0.94
0.95	0.95	0.95
0.96	0.96	0.96
0.97	0.97	0.97
0.98	0.98	0.98
0.99	0.99	0.99
1.00	1.00	1.00